

***POWERFUL AND
VERSATILE MACHINE***

BUFFALO

POWERS





PONSSE BUFFALO

A VERSATILE PROFESSIONAL IN TIMBER HAULING

PONSSE BUFFALO is the best-selling PONSSE forwarder in the world. Its technical systems, reliability in all conditions, combined with its broad range of custom options, makes the Buffalo a dependable tool built to meet the individual needs of each customer.

PONSSE BUFFALO

There is no guessing why PONSSE Buffalo is so popular. It is the best machine for every need, with technical systems proven to be reliable in operations around the world, can be easily found from the broad range of models and optional equipment. The model series consists of eight-wheeled base machines that can be modified in diverse ways. Equipped with the Active Crane boom control system, the grapple becomes an extension of the operator's hand. It goes where you want it to go, easily and effortlessly.

ENGINE AND HYDRAULICS

Powered by a Mercedes-Benz engine, producing well-behaving power over a broad rpm range, the Buffalo moves with the toughness of its namesake. Its fast response to the throttle, steady torque and strong hydraulics make the machine humble and easy to use.

CABIN AND CONTROL SYSTEM

The most spacious and comfortable cabin and the most ergonomic controls guarantee the best working comfort. PONSSE Opti information system is an advanced and easy-to-use interface for machine and work management.

FRAME STRUCTURES AND FRAME OSCILLATION LOCK

The design of the Buffalo frame focuses particularly on durability and ease of maintenance. The reliable frame oscillation lock, equipped with hydraulic cylinders, is solid and acts as a shock absorber when driving. In addition to reliability, the functional positioning and serviceability of components are typical characteristics of the structure.

POWER AND PRECISION

Buffalo's strong hydraulics and precise loader control make loading easy and reliable. The maximum reach of the loaders extend all the way to 10 metres.



ACTIVE CRANE

PONSSE Active Crane offers a new way of controlling the loader and boosting efficiency. It is a loader control system which the operator uses to control the grapple movement instead of individual functions, allowing the operator to concentrate efficiently on loader work. Active Crane is easily controlled using two levers, one of which controls the grapple height from the ground and the other controls the direction of movement. What is essential is that the operator does not need to control all the functions simultaneously. Once the appropriate grapple location has been given to the machine, it will perform the lift and use the boom and extension automatically. The operator can easily switch between Active Crane and conventional loader control with a push of a button. Active Crane is based on Ponsse's unique Sensor Module technology, which is used in the PONSSE Scorpion leveling system.

LONG BOGIE

A long bogie, a new bogie option designed for harvesting in soft conditions, is available for 8-wheeled models of PONSSE Buffalo. The long bogie reduces the ground pressure of the machine significantly compared to a standard bogie when using tracks.

CABIN

WORKPLACE WITH A VIEW

THE BUFFALO HAS NO OBSTACLES TO PRODUCTIVITY IN SIGHT.

The PONSSE Buffalo cabin is your vantage point to the latest in forest machine technology. It is a work environment for professionals who value comfort, safety and ergonomics.

The control devices are the best you will find in forest machines in terms of their ergonomics. The large cabin, expansive windows and thin window pillars ensure excellent visibility in all directions.

Optionally the cabin can also be equipped with the best forest machine seat in the world, PONSSE Seat.



PONSSE SEAT

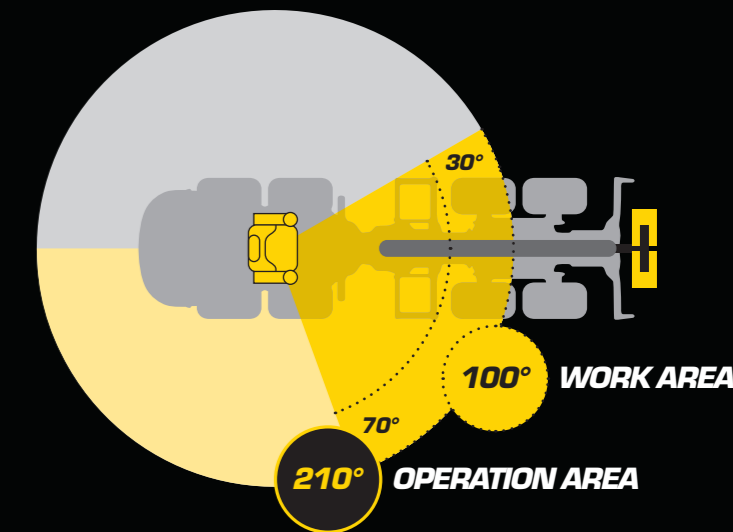
The breathable fabric and ergonomic seat supports, guarantee improved working comfort. Seat fabric is especially durable and the dirt repellent surface makes cleaning effortless. A strong base provides the seat with superior reliability and stability. Thanks to the suspension specifically designed for forest machines, the PONSSE Seat effectively decreases swinging and impacts towards the operator. All adjustment controls are conveniently located at the front of the seat cushion. The removable cushion gives easy access to the seat base for maintenance.



PONSSE ACTIVE SEAT

PONSSE Active Seat provides a full view straight on the job, at all times. It accomplishes this through technology where the operators seat automatically follows the tip of the loader while working. This results in a lot less head movement which significantly contributes to both driver well-being and operating efficiency.

The automatic rotation function covers the entire 100-degree working area. In addition, the operator can manually control the seat: this increases rotation span to 210 degrees, enabling convenient driving to the roadside.



PONSSE FORWARDER EXTRA DISPLAY

Quite often, having another viewpoint on what is happening out there helps – especially when you have to make accurate decisions quickly. PONSSE Forwarder Extra Display mirrors the content of the mounted Opti display which is left behind the driver's back when the forwarder is moving to the direction of the engine. This frees the driver from the need to constantly turn around, contributing significantly to the forwarder's smooth movement and operational safety.



PONSSE ACTIVE CABIN

Not even the toughest logger is immune to all the tremble and shocks that operating a forwarder unavoidably includes. We listened to our customers from all over the world and developed PONSSE Active Cabin to help them take care of their daily tasks without having to worry about unnecessary moments of pain.

The basic idea of PONSSE Active Cabin is simple, yet effective: four sliding elements and four shock absorbers dampen the vibration of the cabin efficiently, so that operating the forwarder on uneven forest roads and rough terrain becomes more comfortable – and thus more productive.



**ACTIVE
CARE**

ENSURE MAXIMUM PRODUCTIVITY

PONSSE Active Care service agreements - We offer the best possible service for forest machine entrepreneurs: you can focus on your logging, while Ponsse takes care that the machine will maintain its performance and productivity from one logging site to the next. With the PONSSE Active Care service agreement, you can outsource the scheduled maintenance of your forest machine to Ponsse. Machines maintained regularly by professionals using only high-quality and original PONSSE parts, lubricants and filters remains in good operating condition and retains its value.

ENSURE MAXIMUM PRODUCTIVITY

PONSSE Active Care service agreements offer the best possible service for forest machine entrepreneurs. You can focus on your logging, while Ponsse will make sure that the machine will maintain its performance and productivity from one logging site to the next. With the PONSSE Active Care service agreement, you can outsource the scheduled maintenance of your forest machine to Ponsse. Machines are maintained regularly by our professionals using only high-quality and original PONSSE parts, lubricants and filters to keep the machines in good operating condition to retain its value.



MERCEDES-BENZ ENGINES

CLEANER AND MORE EFFICIENT

Explosive power and increased torque. Lower emission level and fuel consumption.

The new Mercedes-Benz STAGE V emission engines are efficient and economical. The torque has been increased, and maximum torque can be reached at lower engine speeds.

The Mercedes-Benz STAGE V emission engines are modern, low-emission engines with significantly lower particulate matter (PM) and nitrogen oxide (NOx) emissions compared to engines of the previous emission levels (STAGE III and IV).

In addition to particulate matter, the STAGE V engines also now control particulate volume with a particulate filter (DPF).

Outside Europe an EU Stage V/Tier 4F or Stage IIIA level Mercedes-Benz engine is used depending on market specific emission requirements.

PONSSE MANAGER REAL-TIME MANAGEMENT

PONSSE Manager connects forest machines to an information network.

PONSSE Manager, the modern digitalization platform for forest machines, enables comprehensive services now and in the future. The easy-to-use tool offers assistance in harvesting equipment maintenance and work planning, along with providing access to functional and extensive reporting.

PONSSE Manager provides real-time information on equipment performance and work site status. The solution can be easily used via a smartphone, tablet or computer.



PONSSE MANAGER TAKES YOU TO THE NEXT LEVEL IN DIGITALIZED FOREST MACHINES

Ponsse Manager is an operations management system for forest machine entrepreneurs and fleet loggers. Ponsse Manager was created for customers in order to provide important information concerning their fleet. Ponsse Manager keeps loggers up to date on matters that influence the profitability of their fleet and enables more efficient operations.

MACHINE MANAGEMENT

The right machine in the right place at the right time. Monitor the progress of stands by comparing the estimated timber volume to the cut timber volume.

With the map view and progress of the job site, the user can plan the move to the next site.

MANAGEMENT OF PRODUCTIVITY

PONSSE Manager displays the production volumes of the machines by stand. The application displays the total volume cut, breakdown of timber grades and average size of trees for each on-going stand.

REMOTE MANAGEMENT

The features of PONSSE Manager support efficient machine operations. The application informs the user what is happening with the machine, so the operator can focus on the actual work.

The application makes it possible to contact the information system of the forest machine with a single press of a button.

INSTRUCTIVE PONSSE ECODRIVE

The PONSSE Ecodrive feature makes it possible to monitor productivity and work phases of an individual machine in detail. It also enables momentary productivity comparison to the productivity of the shift. Work phase -specific indicators make it possible to develop working methods to be more productive and economical and ensure the correct functionality of adjustments.

PONSSE Ecodrive is a system that instructs the user and gives feedback based on actual measurements. Ecodrive can measure also the effect of service on the productivity of the machine.

TRANSPORT MANAGEMENT

When machine transport is needed, the operator can place the order directly via the menu of Opti control system.

MANAGEMENT OF MACHINE SERVICING NEEDS

The service section of PONSSE Manager makes it easy to check when the machines require service. The application displays the machine hours, and a scheduled maintenance interval can be set for the machines so that the application reports when the time of service is approaching.

In addition, the operator can record notes on servicing needs directly via the Opti control system of the machine.

REPORTS

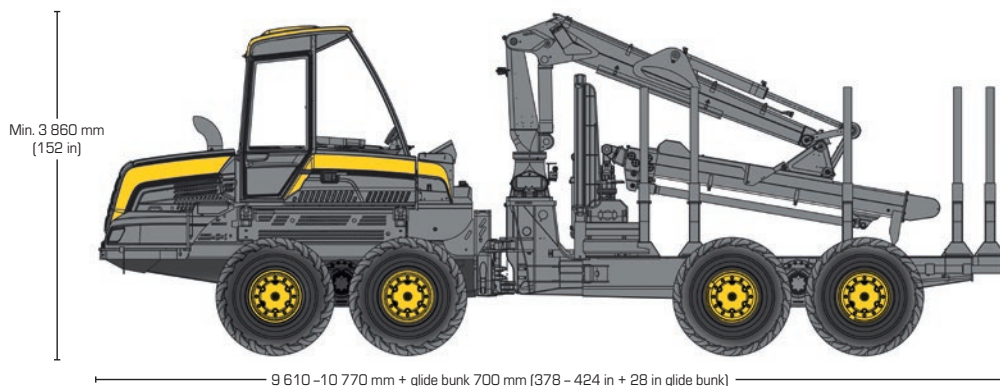
Reports help the user to analyze the amount of production and fuel consumption in different ways. You can also follow and print out measurement certificates.

With the reports produced by PONSSE Manager you can, for example, compare different machines' productivity and follow fuel consumption of any machine.

In work area reports you will see clearly and precisely the amounts of cut assortments and average stem sizes. You can also compare various statistics within a chosen time span. This way you can easily monitor your company's operational efficiency and utilize the information in operational planning.



PONSSE BUFFALO



DIMENSIONS

Weight min:	18 600 kg (41,005 lbs)
Typical weight:	19 800 kg (43,651 lbs)
Length:	9 610–10 770 mm + glide bunk 700 mm (378–424 in + glide bunk 28 in)
Width:	2 895–3 085 mm (114–121 in)
Transportation height:	3 860 mm (152 in)
Ground clearance:	680 mm (26 in)
Steering angle:	± 44 degrees
Outer turning radius:	7 960 mm (26.1 ft) (short rear frame)

LOAD SPACE

Capacity:	14 000 kg (30,865 lbs)
	15 000 kg (33,069 lbs) with balanced bogies
Load space cross-sectional area:	4.5–5.5 m ² (48–59 sq ft)
VLA:	4.5–6.0 m ² (48–65 sq ft)
Load space length:	4 210–5 410 mm + glide bunk 700 mm (165–238 in + glide bunk 28 in)
Log gate can be moved hydraulically.	

TYRES

Front and rear:	26.5"
-----------------	-------

ENGINE

Model:	MB OM 936 LA EU Stage V MB OM 936 LA EU Stage V/Tier 4F MB OM 906 LA Stage IIIA
Power:	EU Stage V & EU Stage V/Tier 4F: 210 kW (286 hp), Stage IIIA: 205 kW (275 hp)
Torque:	1 200–1 600 rpm (EU Stage V & EU Stage V/Tier 4F: 1 200 Nm, Stage IIIA: 1 100 Nm)
Tractive force:	185 kN (41,589 lbf)
Driving speed:	0–20 km/h (0–12 mph)
Fuel tank volume:	200 l (53 gal US)

HYDRAULIC SYSTEM

Control system:	Ponsse Opti Control
Working pump:	190 cm ³ (11.6 cu in)
Oil tank volume:	170 l (45 gal US)

GRAPPLE

Model:	Several different grapple alternatives
--------	--

LOADER

Model:	K90+	K100+	K101	K111
Lifting moment (gross):	140 kNm (103.300 lb-ft)	160 kNm (118.000 lb-ft)	140 kNm (103.300 lb-ft)	160 kNm (118.000 lb-ft)
Reach:	S/M: 7.8/10 m (26/33 ft)	S/M: 7.8/9.5 m (26/31 ft)	S/M 8,1/10 m (26'7/32'10 ft)	S/M 8,1/10 m (26'7/32'10 ft)

In addition to the comprehensive standard equipment, plenty of optional equipment is available for the PONSSE Buffalo. Consult your nearest PONSSE retailer for more information on our standard and optional equipment.



Ponsse Plc

Ponssentie 22
FI-74200 Vieremä
FINLAND
Tel. +358 20 768 800
www.ponsse.com

Ponsse UK Ltd.

4 Annan Business Park
Annan
Dumfriesshire
DG12 6TZ
UNITED KINGDOM
Tel. + 44 1461 207 510

Ponsse Machines Ireland Ltd

Cappakeel, Emo
Portlaoise
R32NN28
Laois
IRELAND
Tel. +353 57 863 3762

Ponsse North America, Inc.

4400 International Lane
Rhinelander, WI 54501
USA
Tel. +1 715 369 4833
Fax +1 715 369 4838