

PONSSE

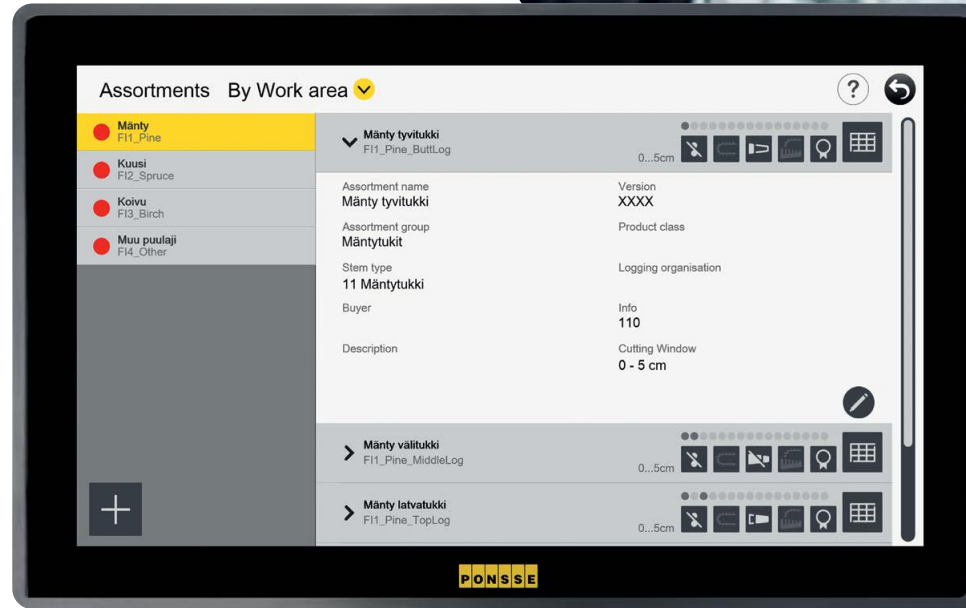
THE WORLD'S BEST FOREST MACHINE INFORMATION SYSTEM

OPTISG



HARVESTING HAS ENTERED THE FUTURE

Forest machines are to be upgraded with a whole new user interface and information system. The fifth generation of PONSSE Opti is here. While some features are similar, the "5G" has nothing to do with mobile communication networks. Speed, ease of use and an outstanding operator focus make daily work and related adjustments as natural as using your smartphone can be.



THROUGHOUT THE WORKING DAY, OPTI 5G SUPPORTS THE OPERATOR LIKE NOTHING ELSE

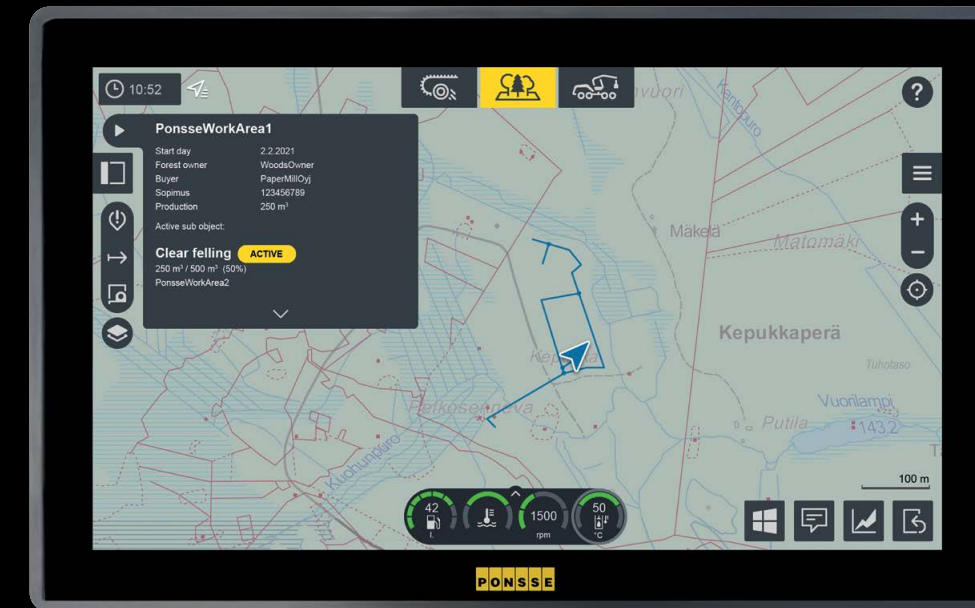
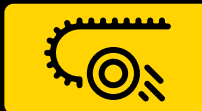
The menus, navigation and structure of PONSSE Opti 5G are so clear and logical that they can be learned by doing, not just by reading the manual. The transition from old to new is also exceptionally easy.

Opti 5G is extremely fast. By using the new PONSSE Opti 8 computer's touchscreen and the advanced Opti 5G user interface, you can take care of daily routines and even machine tuning in a second without wading through menus.

Every function and menu is where it should be. The system makes it obvious that operators have been listened to in the design of the user interface's logic – it acts as an extension of the operator. Frequently used daily functions have been streamlined.



WORK VIEW



PLANNING VIEW



MACHINE VIEW





THE FUTURE IS OPEN

The data produced by the Opti 5G system is also used in digital services that generate additional value, such as the PONSSE Manager application. The application allows the monitoring of fleet productivity, working hours and location, as well as transport management.

An upgraded Eco Drive feeds the operator easily understandable information in real time to optimise their work and the machine's performance.

PONSSE Opti 5G meets all current requirements and is also open to future development. Its features are extensive, and the system can flexibly support various future applications anywhere in the world.



NEW PONSSE OPTI 8

PONSSE Opti 8 is a state-of-the-art touchscreen computer designed for PONSSE forest machines. User-friendliness, a large high-resolution display, high ergonomics in the cabin and responsiveness form the basis of the technical and visual design of the PONSSE Opti 8 computer: all factors that improve the working conditions of forest machine operators.

The new Opti 8 computer offers more power and memory than the previous version, experienced by users in faster and smoother operations. The storage capacity of the hard disk has been doubled to ensure the operation of future applications.

The best properties for demanding conditions

- Enables the research and development of machine information systems far into the future.
- Designed to meet the high-quality requirements of PONSSE forest machines and forest companies.
- Larger 15.6" display with first-rate brightness, resolution and viewing angle.
- Capacitive touchscreen used as on mobile devices.
- Starts immediately, also in extreme cold.
- Windows 10 operating system



Ponsse Plc

Ponssentie 22
FI-74200 Vieremä
FINLAND
Tel. +358 20 768 800
www.ponsse.com

Ponsse UK Ltd.

4 Annan Business Park
Annan
Dumfriesshire
DG12 6TZ
UNITED KINGDOM
Tel. + 44 1461 207 510

Ponsse Machines Ireland Ltd

Cappakeel, Emo
Portlaoise
R32NN28
Laois
IRELAND
Tel. +353 57 863 3762

Ponsse North America, Inc.

4400 International Lane
Rhineland, WI 54501
USA
Tel. +1 715 369 4833
Fax +1 715 369 4838



A logger's best friend
www.ponsse.com