

PONSSE

*A COMPACT
THINNING
TOOL*

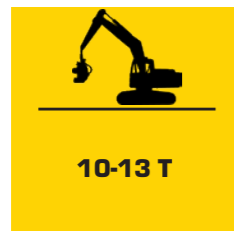
H5



PONSSE H5

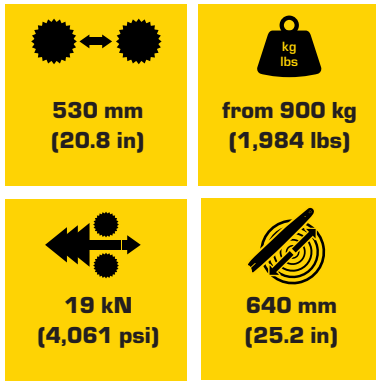
A COMPACT THINNING TOOL

The compact PONSSE H5 harvester head responds to growing thinning needs. The properties of the harvester head have a significant impact on harvesting quality following important first thinning. The agile and small harvester head can be positioned precisely and quickly, also when using its maximum reach, preventing any damage to standing trees. PONSSE H5 harvester head is an expert in multi-stemming to speed up harvesting, and it is nearly as effective in processing individual stems as many larger harvester heads. Despite its small size, PONSSE H5 is a highly powerful thinning harvester head. It is productive at all thinning sites, even with larger diameter trees.

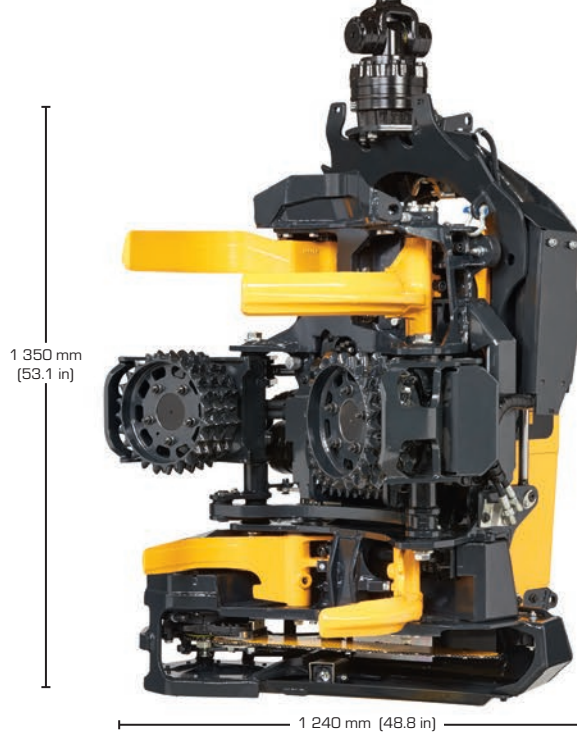


PONSSE H5 is an all-round harvester head designed specifically for efficient thinning. Its large opening range, long delimiting knives and the wide and correctly positioned upper feed roller make working at thinning sites power efficient. It is ideal when removing individual trees or collecting stems and in multi-stemming. The extremely fast yet economical feeding and sawing guarantee high productivity in all conditions.

With PONSSE H5, multi-stemming is easy without any extra weight or additional equipment that requires maintenance. In this way, the capacity and reach of the crane and the stability of the base machine can be fully used in what is essential – processing trees. Multi-stemming is based on the automated operating logic of delimiting knives and feed rollers, so that delimiting knives grab a new stem while feed rollers hold the bundle in the harvester head. The multi-stemming function significantly speeds up harvesting, without weakening the harvester head's features when handling individual stems.



H5



DIMENSIONS:

Weight (without rotator):	from 900 kg (1,984 lbs)
Length:	1 335 mm (52.5 in)
Width:	1 240 mm (48.8 in)
Height without rotator:	1 350 mm (53.1 in)
Power consumption:	80–100 kW
Operating pressure:	28 MPa (4,061 psi)

FEED ROLLER

Feed method:	3 feed rollers
Calculated gross feed force:	19 kN (4 271 lbf)
Maximum feeding speed:	6 m/s (19.7 ft/s)
Maximum opening:	530 mm (20.8 in)

OPTIONAL EQUIPMENT

Plenty of optional equipment is available in addition to the comprehensive PONSSE H5 standard equipment. Consult your nearest Ponsse Service Center or dealer for more information on the standard and optional equipment.

SAW UNIT

Hydraulic chainsaw:	
Saw bar length:	750 mm (30 in)
Cutting diameter:	640 mm (25.2 in)
Chain:	0,404"

* Available optional saw box lights and saw chain grease lubrication.

DELIMBING UNIT

Number of knives:	4+1
Maximum opening of front knives:	550 mm (21.6 in)
Maximum opening of rear knives:	600 mm (23.6 in)
Delimiting knives and feed rollers are separately controlled	

The manufacturer reserves the right to make technical changes and improvements.

Ponsse Plc

Ponssentie 22
FI-74200 Vieremä
FINLAND
Tel. +358 20 768 800
www.ponsse.com

Ponsse UK Ltd.

4 Annan Business Park
Annan
Dumfriesshire
DG12 6TZ
UNITED KINGDOM
Tel. + 44 1461 207 510

Ponsse Machines Ireland Ltd

Cappakeel, Emo
Portlaoise
R32NN28
Laois
IRELAND
Tel. +353 57 863 3762

Ponsse North America, Inc.

4400 International Lane
Rhineland, WI 54501
USA
Tel. +1 715 369 4833
Fax +1 715 369 4838



PONSSE

A logger's best friend

www.ponsse.com